

Efforts by HELCOM in reducing nutrient enrichment and eutrophication of the Baltic Sea

Maria Laamanen, Professional Secretary, Helsinki Commission

P-recycling in Agriculture Seminar, June 8 2009, Helsinki, Finland



Contents



- HELCOM
- Eutrophication status 2001-2006
- Baltic Sea Action Plan (BSAP)
- Implementation of the Baltic Sea Action Plan
- Trends in nutrient loads

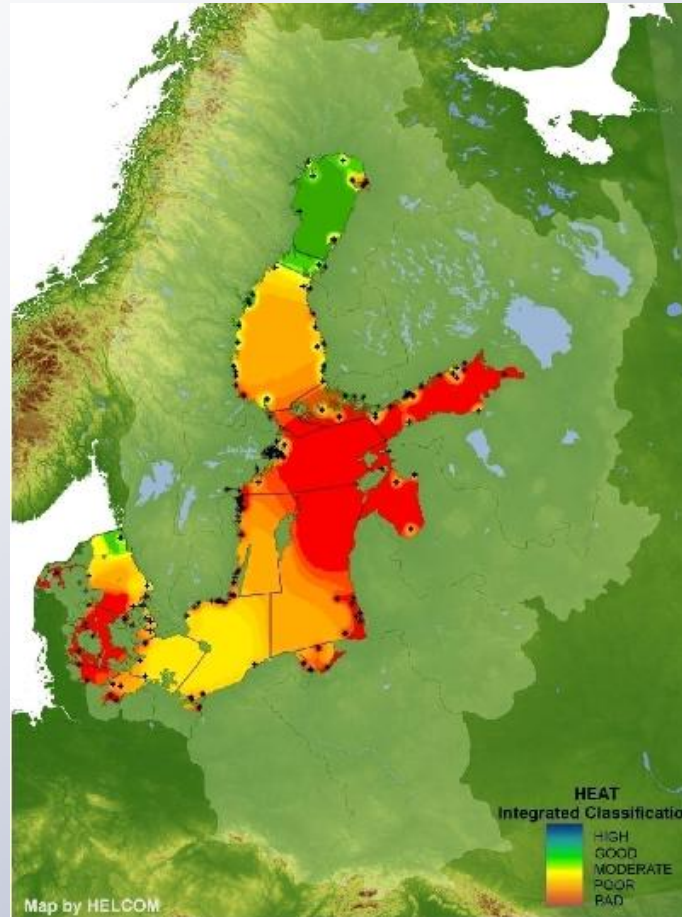


HELCOM's role in the Baltic

- 1974: Convention on the Protection of the Marine Environment of the Baltic Sea Area (Helsinki Convention) and in 1992: revised Convention
- Governing body of the Convention, the Helsinki Commission (HELCOM) is made up of Denmark, Estonia, European Community, Finland, Germany, Latvia, Lithuania, Poland, Russia and Sweden
- HELCOM is the environmental focal point for the Baltic Sea
- HELCOM coordinates regional monitoring activities and regularly produces targeted, timely and scientifically sound assessments
- HELCOM acts as the environmental policy maker developing common objectives and actions



The Baltic Sea remains eutrophicated



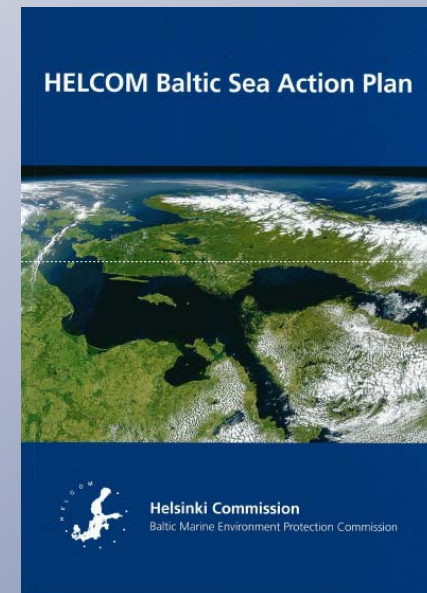
- HELCOM's Integrated Thematic Assessment of eutrophication published in March 2009 presents eutrophication status/classification of 189 areas of the Baltic

- Only 13 of the 189 areas were not eutrophicated in 2001-2006

- The non-eutrophicated areas were found either in the Gulf of Bothnia or the Kattegat

HELCOM Baltic Sea Action Plan

- Adopted 15 November 2007 in Ministerial Meeting in Krakow
- Based on regional application of the "*Ecosystem Approach*"
 - as decided by HELCOM Ministers in 2003
 - follow up to 1992 Rio Declaration
- Encompasses and integrates four priority areas
 - Eutrophication
 - Hazardous substances
 - Biodiversity and nature protection
 - Maritime Activities
- Sections on funding, public awareness and assessment methods



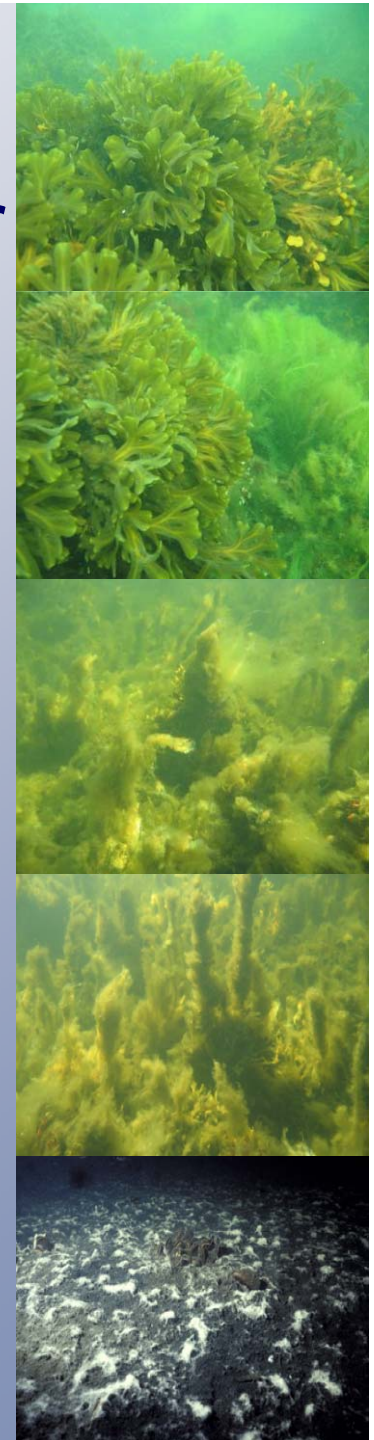
http://www.helcom.fi/BSAP/en_GB/intro/



Setting quantitative environmental targets for “Clear water”

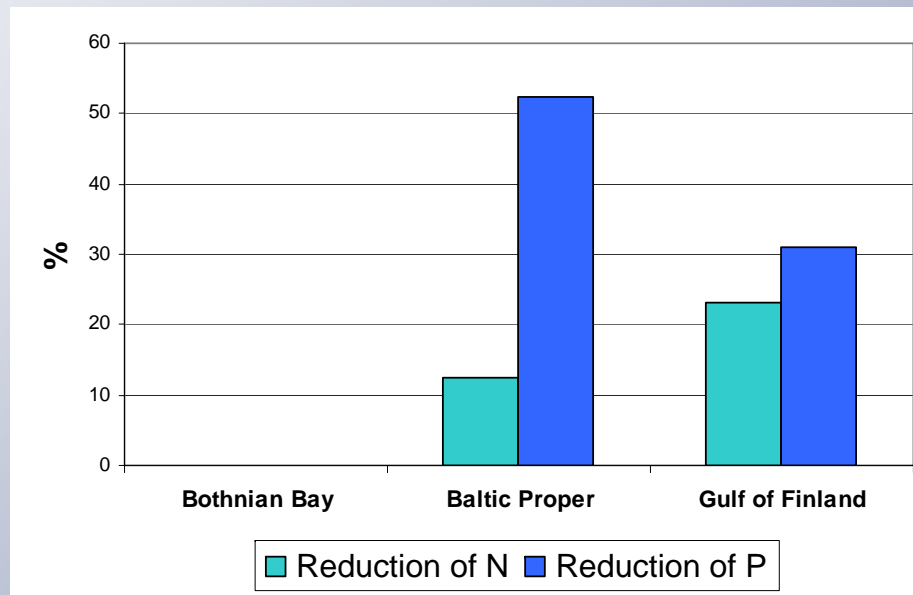
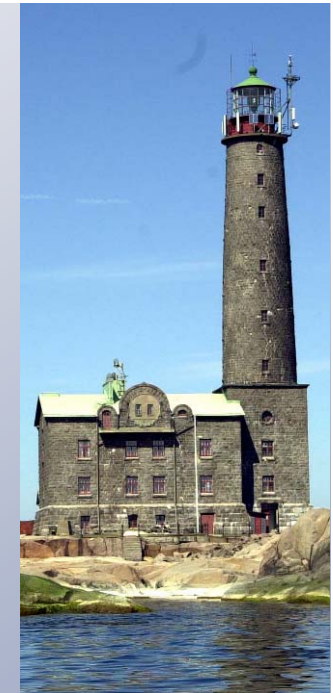


- Secchi depth used for describing water transparency and the quantity of planktonic algae in water
- Exact targets were set for each Baltic Sea sub-basin using data on historical levels of Secchi depth



How much of nutrient load reductions are needed to reach “Clear water”?

- Reaching the water clarity target requires:
 - reduction of 42% total phosphorus and
 - 18% total nitrogen for the Baltic Sea
- Provisional nutrient reduction targets



HELCOM Baltic Sea Action Plan – Actions for eutrophication



- Specific measures
 - Efficient treatment of waste waters from municipalities, scattered settlements and single family homes (HELCOM Recommendations)
 - P-free detergents
 - Agriculture: requirements for animal farms, manure handling and fertilisation (revised Annex III of the Convention)
 - Establishment of lists of hotspots (animal rearing, waste water treatment) to facilitate establishment and funding of projects
- HELCOM countries to develop national implementation programmes by 2010
 - to reach the provisional nutrient reduction requirements
 - flexibility to include most suitable and cost-effective measures



HELCOM Baltic Sea Action Plan – Actions

- Transboundary inputs to be addressed jointly
 - bi- and multilateral projects
 - involving also private initiatives
- Strong link to regional and global processes
 - e.g. EU Baltic Sea Strategy, EU Marine Strategy Framework Directive and Maritime Policy
 - joint input from HELCOM Contracting Parties to processes within international fora to reach Baltic environmental objectives, e.g. IMO, EU, UNECE CLRTAP



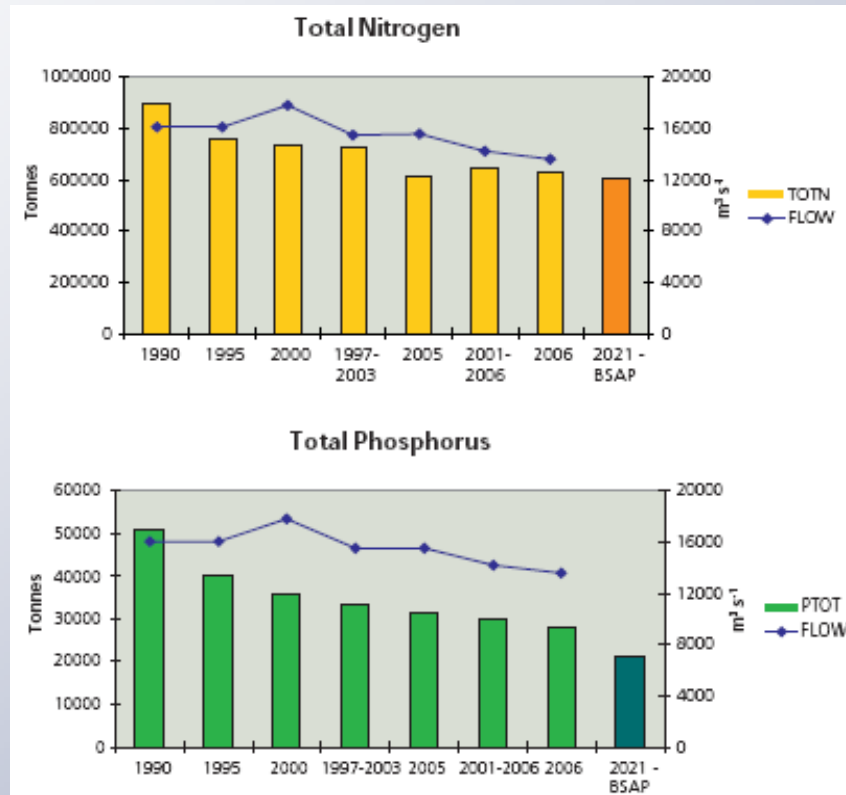
Implementation of the BSAP



- Implementation Group
 - political guidance on implementation
 - assess and review the implementation of the BSAP:
 - achievement of ecological objectives
 - development of harmonised assessment tools and methodologies
- HELCOM Ministerial Meetings
 - Meeting in May 2010
 - Holistic assessment of the status of and pressures to the marine environment in 2001-2007
 - National Implementation Programmes for eutrophication and hazardous substances to be presented
 - Meeting in 2013
 - Evaluation of the effectiveness of the Programmes and other measures i.e. Review of the progress towards the environmental targets



Eventhough the sea remains eutrophicated the total loads are decreasing



- Total nutrient inputs to the Baltic have decreased between 1990 and 2006



Thank you!

For more information please contact:

Helsinki Commission
(HELCOM)
Katajanokanlaituri 6 B
FI-00160 Helsinki
Finland

www.helcom.fi

